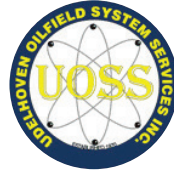
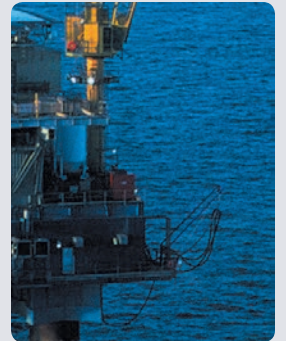
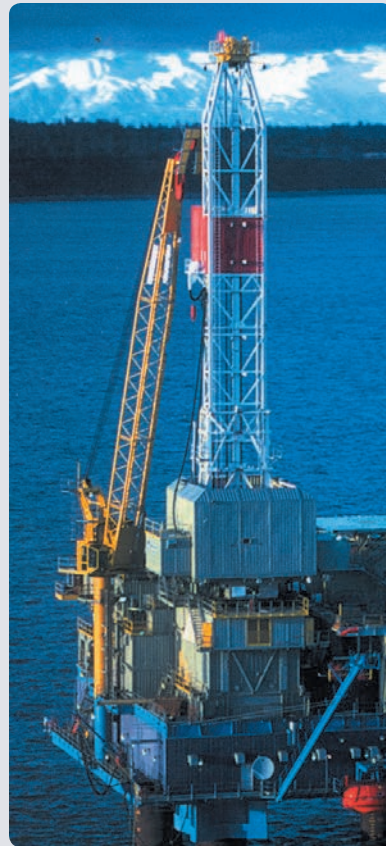


UDELHOVEN

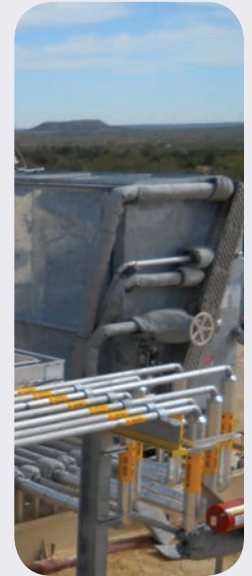
OPERATING COMPANIES



Built on safety, quality and customer satisfaction



SERVING THE INDUSTRY
FOR OVER **50** YEARS



Mission Statement

Our goal is to build a company that provides a service or builds a project to the complete satisfaction of its customers.

We shall strive to be number one in reputation with our customers and our employees.

We must perform safely.

We must provide quality performance.

We must make a profit.

We shall share our successes and profits with our employees.

Work can be taken from us in many ways, but our reputation is ours to lose.

Our reputation is the key that will open doors to new business in the future.



James Udelhoven

Chief Executive Officer

UDELHOVEN COMPANIES

Table of Contents

History	2
Udelhoven Companies Locations	4
HSE - Safety	6
Summary of Capabilities & Services	7
Professional and Technical Resources	8
Commercial Construction	9
Industrial Construction Services	10
NBIC “R” Stamp	10
Electrical, Instrumentation & Mechanical Maintenance	11
Automation Services	12
Instrumentation and Control	13
Inspection and Commissioning Services	14
Ultrasonic Leak Detection Services	15
Project Management and Accounting	16
Customer List.	17



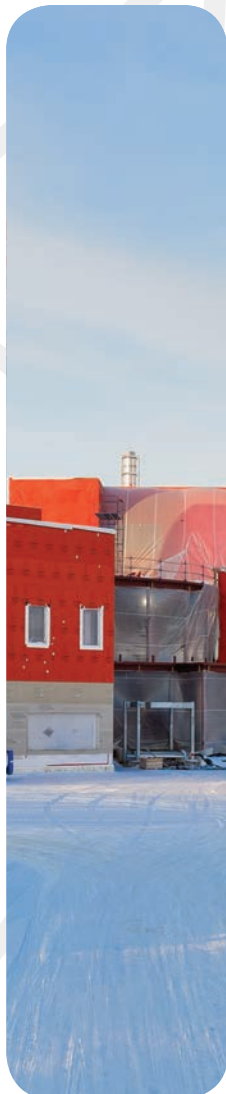
Serving the industry since 1970

HISTORY



Established on Alaska's Kenai Peninsula in 1970, Udelhoven Companies has served the special needs of general contracting and oil production in Alaska, Tennessee, Texas, New Mexico, Pennsylvania, the Caribbean, Canada, China, Russia, Venezuela, Trinidad, Australia and the Gulf of Mexico. As a licensed general, mechanical, electrical and full-service contractor, we have a proven record of success in the industry.

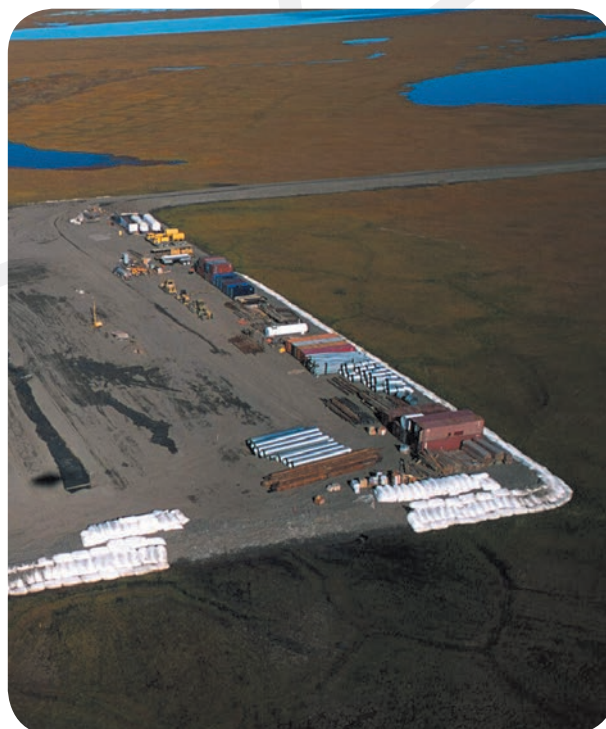
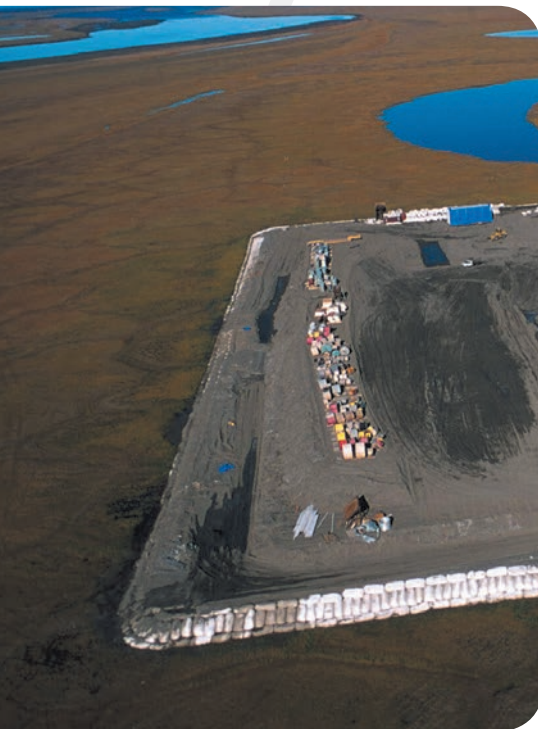
Over the years, we have maintained steady and consistent growth fueled by the operating premise of founder Jim Udelhoven - "Provide quality service by using conscientious professional managers and craft personnel." This commitment has made us a dynamic, growth-oriented company that continues to meet our clients' evolving needs and requirements.



Udelhoven Companies excels in industrial and commercial construction, professional technical services, fabrication, maintenance, and operations. We have diversified our products and services from new commercial and oilfield construction development to technical services supply, maintenance and construction management.

In response to industrial demands and market conditions, Udelhoven Companies continues to expand to instrumentation and controls, automation, inspection, and commissioning. We have developed an extensive database of qualified personnel, with experience in a wide area of geographic locations. The Udelhoven philosophy of flexible and diverse resources and services is guided by the highest quality and safety standards.

We are committed to the ever expanding needs of industry and commerce in this continuously shifting environment.



UDELHOVEN COMPANIES LOCATIONS



Alaska North Slope

This site handles and manages construction, supplier quality surveillance, quality assurance, project controls and functional check out. It also contains construction management and support personnel, pre-commissioning and commissioning for maintenance and capital projects.



Kenai, Alaska

The company was originally founded and operated from the Kenai Peninsula. As the company grew, corporate headquarters were moved to Anchorage. The company maintains a large presence on the peninsula, with a 27,000 sq. ft. shop and fabrication site, a rail car module transfer system and a material lay down storage. The 12-acre facility houses two 10-ton cranes, for a total of 20-ton lifting capacity, and provides fabrication support and service to the industry state-wide

Anchorage, Alaska

UOSS has a 5-acre fabrication facility centrally located on King Street in Anchorage. This site provides support for UOSS projects and complete fabrication support for modules, piping, structural and electrical components, as well as a receiving and lay down area for North Slope project materials. To complement and support the Anchorage fabrication facilities we also have a 10-acre lay down storage area in Eklutna, Alaska.

Notrees, Texas

Our newest site is centrally located in the Permian Basin. The 100-acre site provides and supports these services: construction and maintenance, mechanical, pipe fitting and welding, electrical/instrumentation, structural pipe and module fabrication, and civil work. We carry a New Mexico Electrical License and our professional services arm specializes in project start-ups, FCO, and pre-commissioning.

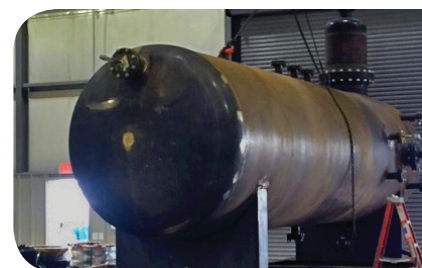
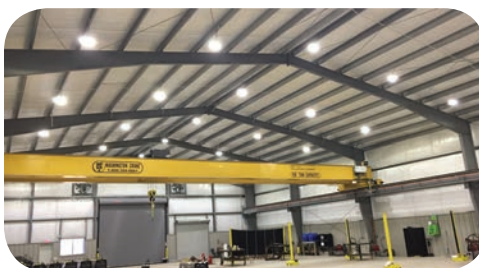


Floresville, Texas

Our main Texas location supports and serves all of the Eagle Ford Basin, our offshore U.S. Gulf Coast work, as well as international support for Russia, the Caribbean, China and Calgary, Alberta. It provides construction and maintenance, mechanical, pipe fitting and welding,

electrical/instrumentation, structural fabrication, and civil work. We have a 20-acre facility with a 12,000 sq. ft. fabrication shop with a 10-ton overhead crane and state-of-the-art modular fabrication features. We

are a State of Texas licensed electrical and plumbing contractor, and our professional services sister company, Udelhoven Inc., specializes in project start-ups, FCO, and pre-commissioning.



HSE - Safety - Not Only the Way We Conduct Business, But the Way We Live

Udelhoven Companies has comprehensive HSE programs designed to provide a safe, healthy, and environmentally responsible workplace. These include Operator Qualification, Management Audits, Site Health Safety & Environmental Inspections and Incident Investigation and Review. Our programs also include Claims Management, Substance Abuse Programs and Policies, Behavioral Based Safety Programs, Job Safety Analysis (JSA) and Job Hazard Analysis (JHA), as well as project-specific safety programs and incentives.

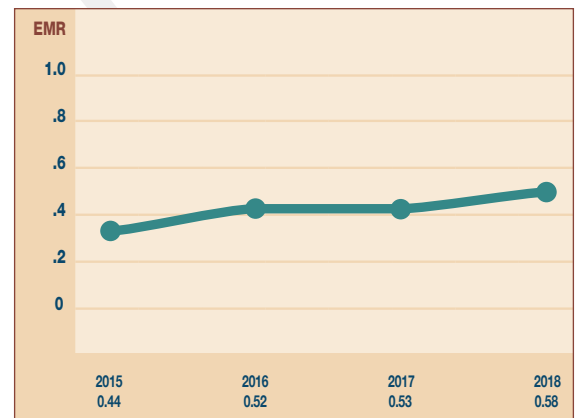
Udelhoven Companies has set an aggressive goal of “ZERO” incidents. Everything that we do is influenced by our “ZERO” incident safety culture, that ALL accidents and incidents are preventable. We are fully committed to ensuring the safety of our employees, clients and subcontractors at all times by empowering our people to intervene when they observe an unsafe act or condition. At Udelhoven, it is not only a right, but a moral obligation to intervene when someone or something could be harmed or damaged.

Training is a vital part of our health, safety and environmental success at Udelhoven Companies. Supervisor training greatly reduces the risk of workplace accidents and injuries. Training places the control of safety in the workplace at the most appropriate level. The focus of supervisor training at Udelhoven is to prevent future accidents and injuries in order to increase the safety and health of all our employees.

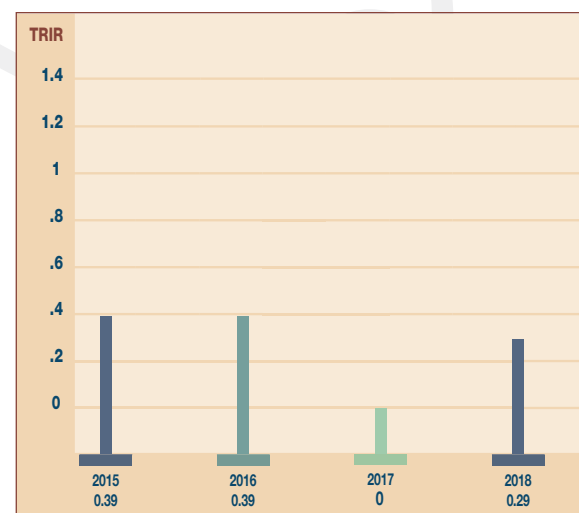
We are always working to create the safest workplace.



*Udelhoven Companies
Workers Compensation Rate (EMR)
2015-2018*



*Udelhoven Companies
Total Recordable Incident Rates
2015-2018*



SUMMARY OF CAPABILITIES & SERVICES

INDUSTRIAL CONSTRUCTION

COMMERCIAL CONSTRUCTION

OIL & GAS OPERATIONS AND MAINTENANCE

PROCUREMENT

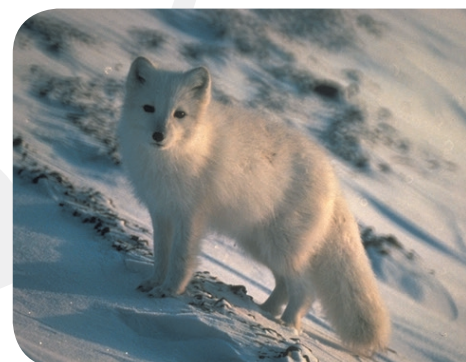
FABRICATION

FUNCTIONAL CHECK OUT AND COMMISSIONING

AUTOMATION SYSTEMS

ULTRASONIC LEAK DETECTION

TECHNICAL SUPPORT



INDUSTRIAL CONSTRUCTION



Udelhoven offers comprehensive industrial construction services for new or existing facility types, including: chemical, petrochemical, pipeline, power plants, and water treatment.

Our highly qualified team excels at piping, electrical installation, instrumentation, structural construction, functional check out, commissioning, and third-party quality assurance. We have extensive experience working in remote locations under arctic conditions, especially on Alaska's North Slope.

All personnel are fully trained in safety awareness and receive specialized training as required by the particular function or location. Each employee follows corporate safety policies except in areas in which the facility safety policies and procedures exceed those prescribed by Udelhoven Companies.

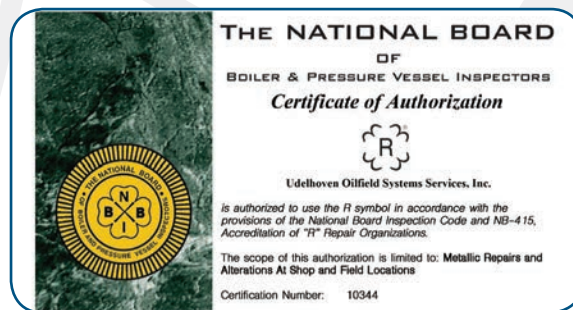


National Board of Boiler & Pressure Vessel Certificate of Authorization - "R" Symbol Stamp

During 2016, UOSS applied for authorization to use the NBIC

"R" Stamp from the National Board of Boiler & Pressure Vessel Inspectors. UOSS was successful in meeting all the requirements and was ultimately given authority to obtain a Certificate of Authorization.

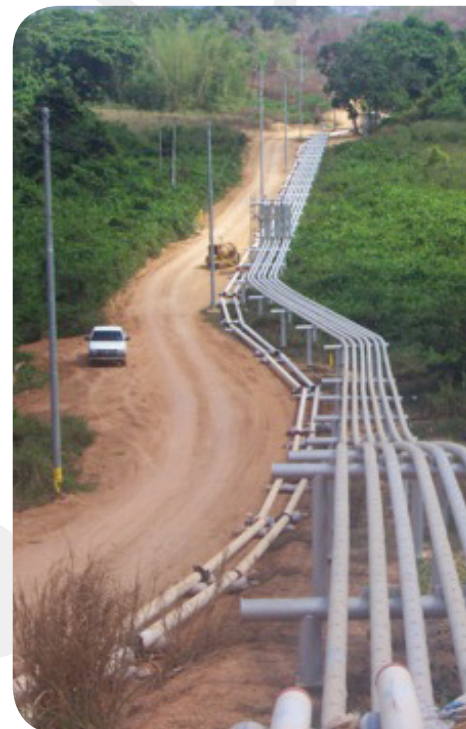
The **"R" Stamp** enables UOSS to perform metallic repairs and alterations at shop and field locations on tanks and vessels fabricated to the requirements of the ASME Boiler Pressure Vessel Code. Our "R" Stamp is held at our Kenai location.



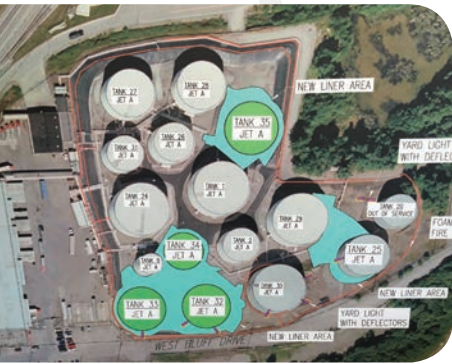
As a General Contractor, Udelhoven offers commercial construction services for new and existing buildings in a variety of sectors, including education, government, healthcare, industry, and multi-unit residential. We specialize in:

- **CIVIL**
- **STRUCTURAL**
- **MECHANICAL**
- **ELECTRICAL**
- **INSTRUMENTATION INSTALLATION**
- **TESTING**
- **COMMISSIONING**
- **OPERATIONS**
- **MAINTENANCE**

Our construction management processes include: administration, project management, planning, scheduling, estimating, procurement, cost control, field engineering, quality control, and safety management.



OIL & GAS OPERATIONS AND MAINTENANCE



Udelhoven's diverse project experience has resulted in ever-expanding expertise in the operation and maintenance of mechanical, electrical, and instrumentation systems for petrochemical, oilfield, power, and public works facilities. Udelhoven is also a multi-faceted, multi-discipline maintenance contractor, with extensive experience working in the Arctic.

Udelhoven provides maintenance services inclusive of:

- **STRUCTURAL**
- **MECHANICAL**
- **ELECTRICAL**
- **AUTOMATION/CONTROLS**
- **INSTRUMENTATION**
- **INSPECTIONS**
- **FUNCTIONAL CHECK OUT**
- **COMMISSIONING**

Udelhoven operates a fully integrated purchasing, receiving, and materials preservation department. Our materials management process includes:

- **PROCUREMENT**
- **TRACKING**
- **RECEIVING**
- **INSPECTION**
- **STORAGE**
- **CLOSEOUT FOR ALL PROJECT EQUIPMENT AND MATERIALS**

Udelhoven purchases and stages all specified equipment and materials well in advance of construction and monitors quality throughout installation.



FABRICATION



Udelhoven provides all phases of fabrication and assembly of process modules, electrical modules, pipe racks, flowline piping, well tie-in piping, and associated structural components. Udelhoven performs high-quality fabrication at facilities located in Anchorage and Kenai, Alaska, and Floresville, Texas. Each fabrication facility has the infrastructure, equipment, and labor resources to efficiently meet project needs.



FUNCTIONAL CHECK OUT AND COMMISSIONING

Udelhoven offers pre-commissioning (i.e., calibration, lubrication checks, cause and effect testing), functional check out, start-up, and final commissioning for buildings and oilfield projects that include production facilities, gas plants, and power plants. Udelhoven routinely verifies that vendor-provided equipment is constructed as designed and to installation specifications.

FUNCTIONAL CHECK-OUT

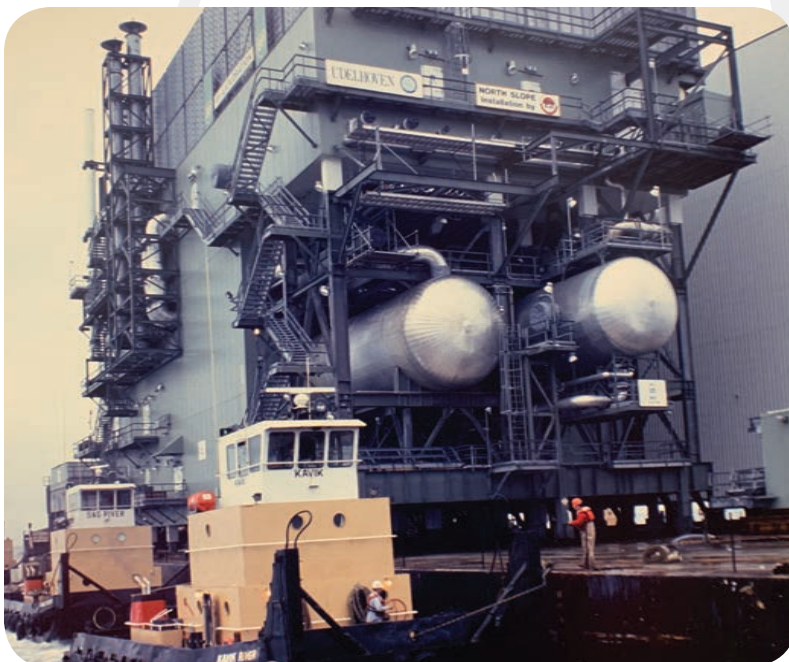
- Management
- Supervisory
- Technicians

TRAINING

- Operations
- Maintenance
- Materials support

COMMISSIONING SUPPORT AND START-UP

- Operations Managers
- Operators and Field Personnel



AUTOMATION SYSTEMS



Udelhoven offers automation management expertise for instrumentation that controls temperature, pressure, and flow of petrochemicals. We have the technical expertise to integrate new or existing automation equipment with the ability to expand as production and/ or technology advances. We routinely implement engineering check-off sheets and perform cause and effect testing.



- **Programmable Logic Controller (PLC) and Multi-Function Controller (MFC) systems including conceptual design, system architecture, logic diagrams, programming and graphic operator interfaces**
- **Distributed Control System (DCS) and SCADA system design and installation**
- **System integration of either new, existing or future components, such as: for a single application or a facility-wide network including distributed operator terminals, distributed engineering and management terminals, and production reporting systems**
- **System consultation and planning for long-term automation plans including selection of front end instrumentation and controllers, operating system platforms and communications protocols, capabilities of existing systems, installation requirements and impacts on production**
- **Design and installation of instrument network systems such as HART, CAN, Modbus and Profibus systems**
- **Both on and off-site capabilities for all automation services and training**



ULTRASONIC LEAK DETECTION

Udelhoven's Ultrasonic Leak Detection services offer a unique solution to many of the leak testing problems facing the industry. Our personnel are UE Systems Level 1 Certified and provide the expertise required to leverage innovative ultrasonic leak detection devices to identify, trace, and analyze a leak's source, even in windy or gas-saturated contamination areas. Since these devices detect the sound of a leak, they are able to detect any type of pressured system, including gases and vacuum leaks. In particular, these devices are extremely valuable when testing associated system components such as instruments, traps, bearings, duct work, and gaskets.

Udelhoven Companies will continue to invest in the oil and gas industry with innovative and quality services.



TECHNICAL SUPPORT



Udelhoven offers a wide range of individualized and team-oriented technical support services, including:

- **INSTRUMENTATION**
- **AUTOMATION**
- **FIRE AND GAS SYSTEMS**
- **HVAC**
- **PROJECT MANAGEMENT**
- **PROJECT ENGINEERING**
- **PLANNING**
- **SCHEDULING**
- **COST ESTIMATING**
- **COST CONTROLS**
- **DOCUMENTATION**
- **TURNOVER/CLOSEOUT**
- **IT AND DATABASE SETUP AND MANAGEMENT**



Udelhoven also provides recruitment and staffing of highly qualified industry professionals for our oil & gas clients. We have extensive experience working in remote locations, from west Texas, to the north slope of Alaska, and all around the world.



Udelhoven Companies Customer List

Success in the Industry

Alaska Pipeline
Alcan General
Alyeska Pipeline Service Company
Anadarko
Anchorage Service International Group
Apache
Atigun
Atigun Services
Baker Hughes
BELCO
(Bermuda Electric Company)
BHP
Bloom Energy
BP de Venezuela
BP Exploration
BP Products America
BP Republic of Georgia
BTC/SCP Pipeline
Chevron
Cispri
City of Homer
City of Unalaska
CNOOC
(China Offshore Engineering Co., Ltd)
ConocoPhillips
ConocoPhillips China
Cook Inlet Energy
Cook Inlet Pipeline
Crowley Alaska
Davis Constructors
Enbridge
ENI Petroleum
Expro Energy
Exxon Mobil
Flint Hills Resources
Forest Oil
Goodnight Midstream
Hella Mine
Hilcorp
Hinze Automation
J. Ray McDermott
Kerr McGee
M I Swaco
Marathon Oil
Marathon Petroleum Corp.
MCN Construction
Modec international, LLC
Municipality of Anchorage
Neeser Construction
Osborne Construction
PCL Construction
Petro Star
Pioneer
Premcor
Roger Hickel Contracting
SBM Atlantia
Schlumberger
SKW
Technip
Tesoro
UIC Construction
Unit Construction
Unocal
Valero
Vector Pipeline
Wallace Electric
Watterson Construction
Williams Energy
XTO Energy



Copyright ©2019 Udelhoven

All rights reserved. Reproduction of product formats or descriptions in part or whole is prohibited by law.

UDELHOVEN

OPERATING COMPANIES

Built on safety, quality and customer satisfaction



Anchorage (Main Office)

184 East 53rd Ave.
Anchorage, AK 99518
907-344-1577

Kenai, Alaska

53340 Sandy Lane
Kenai, AK 99611
907-283-5900

Floresville, Texas

1210 FM 537
Floresville, TX 78114
830-542-3100

Notrees, Texas

14800 W. Hwy 302
Notrees, TX 79759
432-270-9090

Email inquiries: info@udelhoven.com

www.udelhoven.com

